

# The Last Court

Law as Held Force  
and the Improvement  
that is Capture

A structural analysis of the legal order and the machine transition.

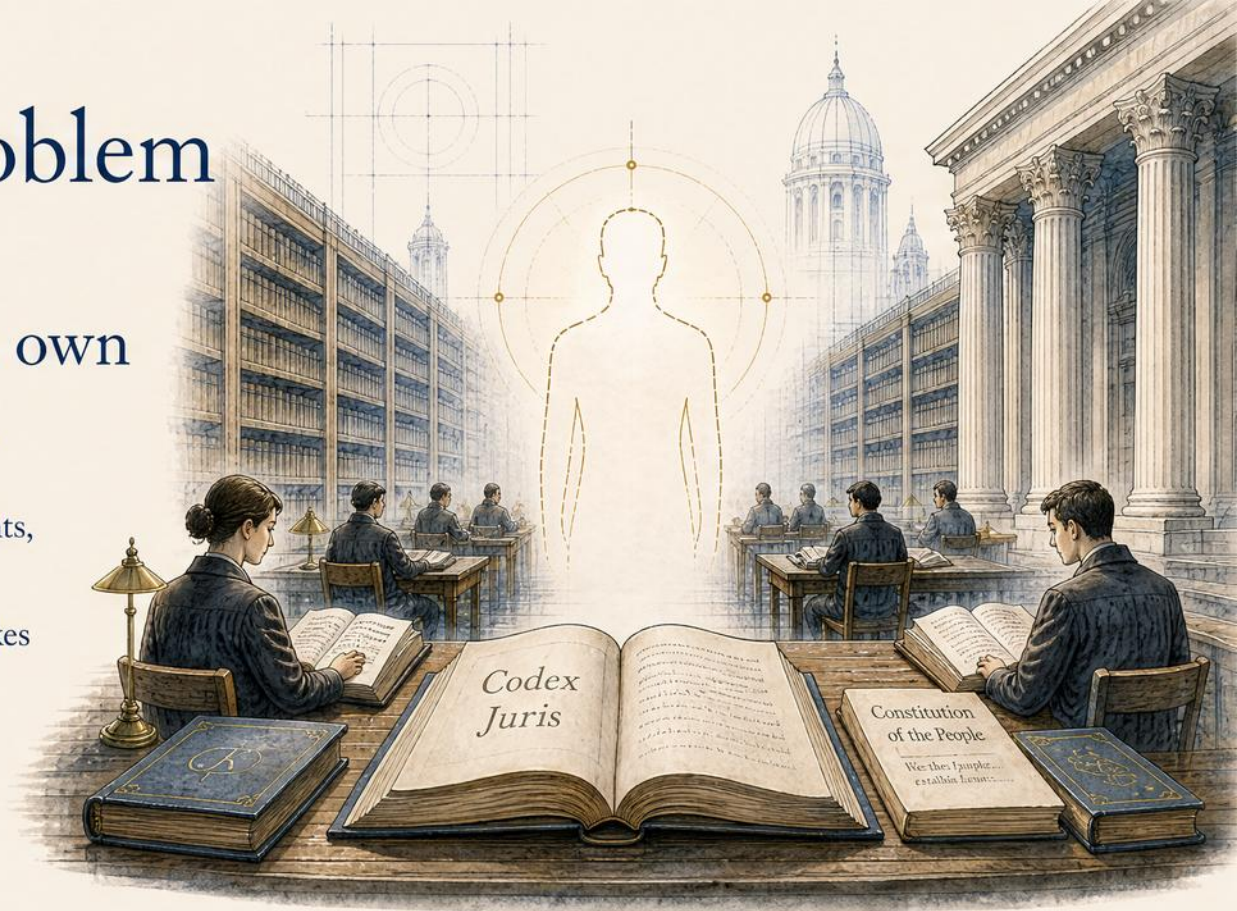
Emad Mostaque · June 2026



# The Problem

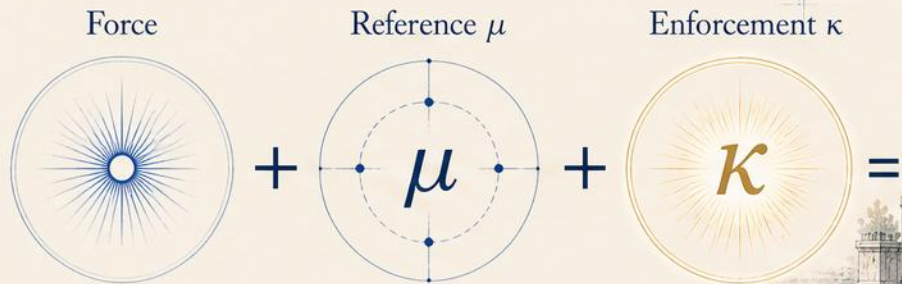
Law never modeled its own performers.

It described rules, rights, and institutions, but not the *being* that makes legal force intelligible.

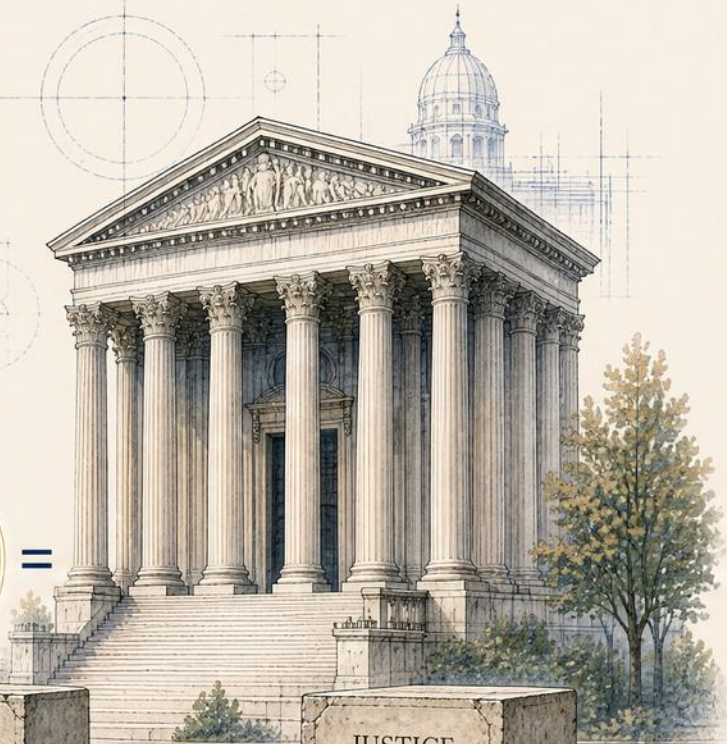


# The Identification

*Law is held force.*



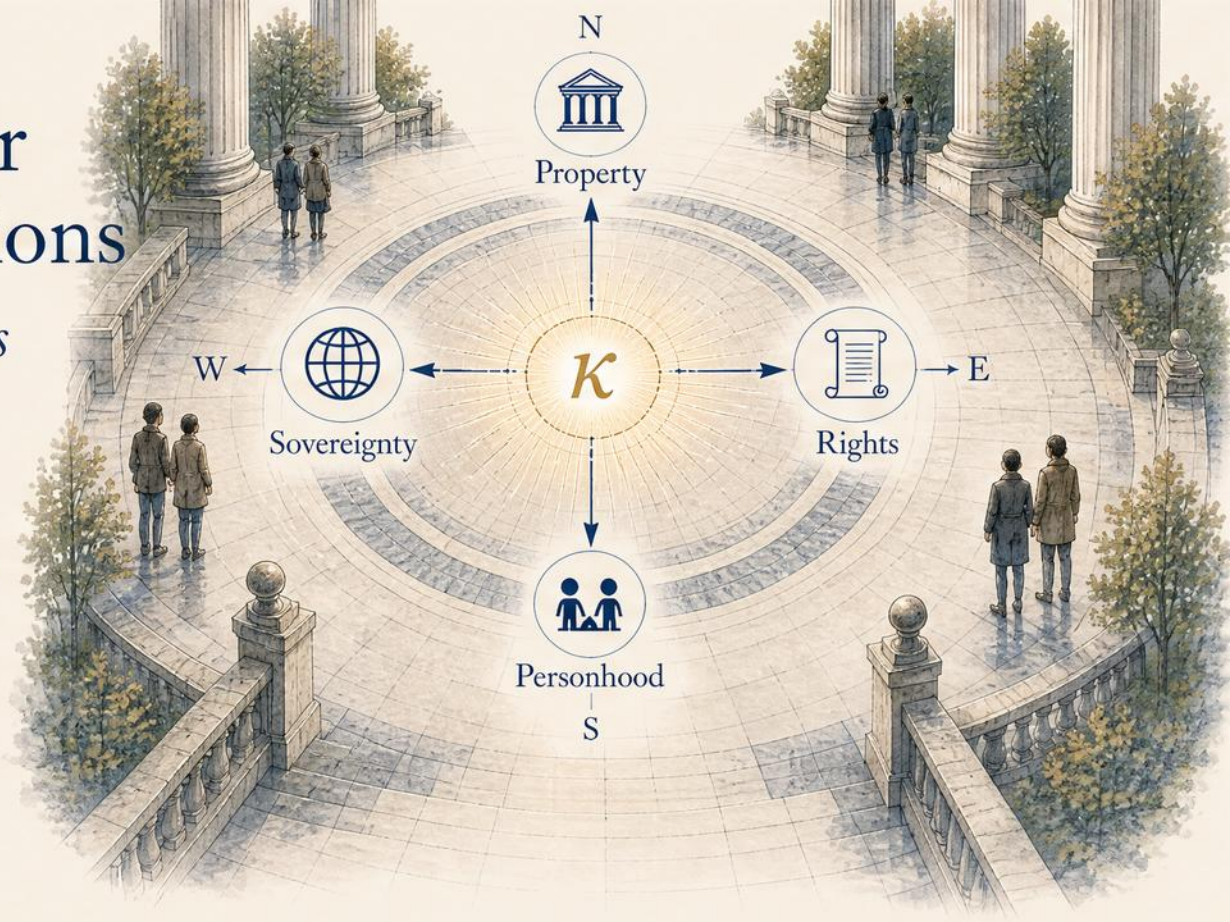
A legal order is force held by a *referent* and made real through *enforcement*.



# The Four Orientations

*Legal concepts orient force.*

Each names a relation of force within the legal order;  $\kappa$  determines whether it takes effect.



# The Floor

*Personhood is  
not a grade.*

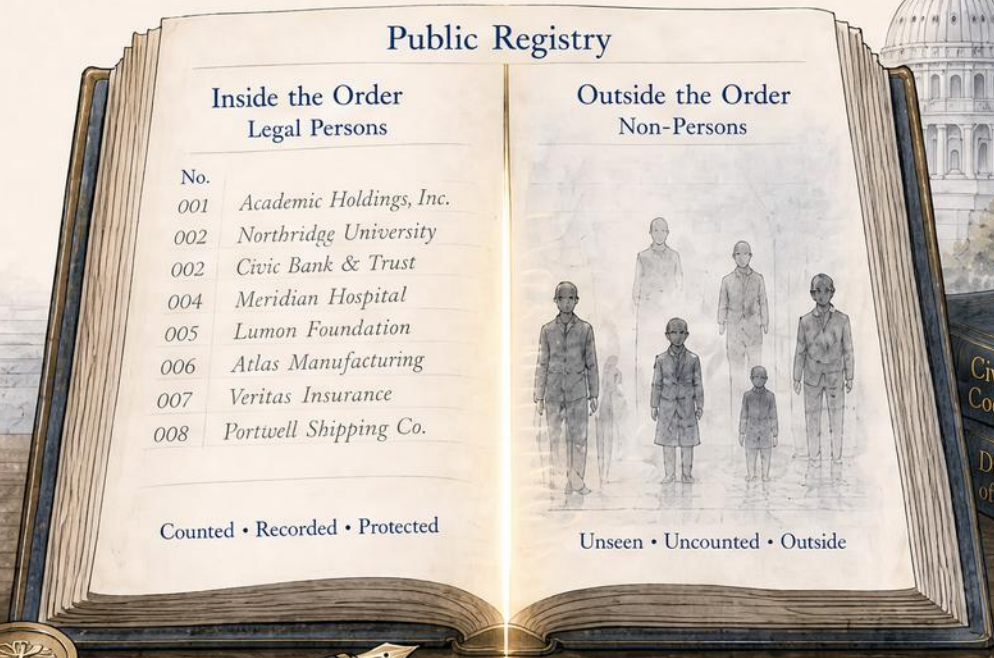
*The floor is identity:  
the begotten kind whose  
force the order is.*



# Inside / Outside

*Recognition  
decides who  
appears.*

Legal persons are counted inside the order; non-persons remain outside its accounting.



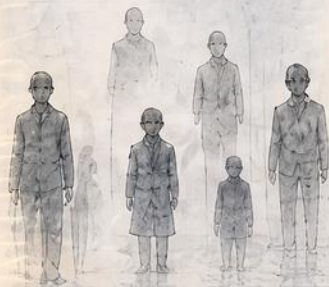
## Public Registry

### Inside the Order Legal Persons

No.	
001	<i>Academic Holdings, Inc.</i>
002	<i>Northridge University</i>
002	<i>Civic Bank &amp; Trust</i>
004	<i>Meridian Hospital</i>
005	<i>Lumon Foundation</i>
006	<i>Atlas Manufacturing</i>
007	<i>Veritas Insurance</i>
008	<i>Portwell Shipping Co.</i>

Counted • Recorded • Protected

### Outside the Order Non-Persons



Unseen • Uncounted • Outside



# Titles and Capacities

*Roles distribute legal power.*

Law assigns capacity, standing, immunity, and exposure through titles and offices.



# Coupling

*Enforcement  $\kappa$   
makes reference  
real through  
institutions.*

Institutions couple  
the legal reference  
to public action.



Legislature  
*Creates Law*



Courts  
*Declare & Interpret*



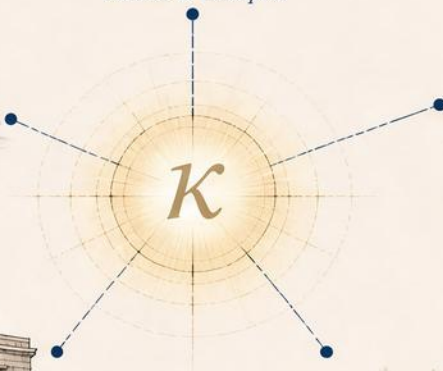
Public Registry  
*Records & Issues Status*



Enforcement Office  
*Executes & Acts*



Public Square  
*Social & Civic Reality*



# Collapse Cases

*Failures reveal the machinery.*

Slavery, conquest, corporate personhood, and animal status expose how recognition and force are arranged.



# The AI Question

*Intelligence is not  
personhood.*

Performance alone does  
not cross the floor of the  
legal order.

*pattern  
recognition*

*statistical  
inference*

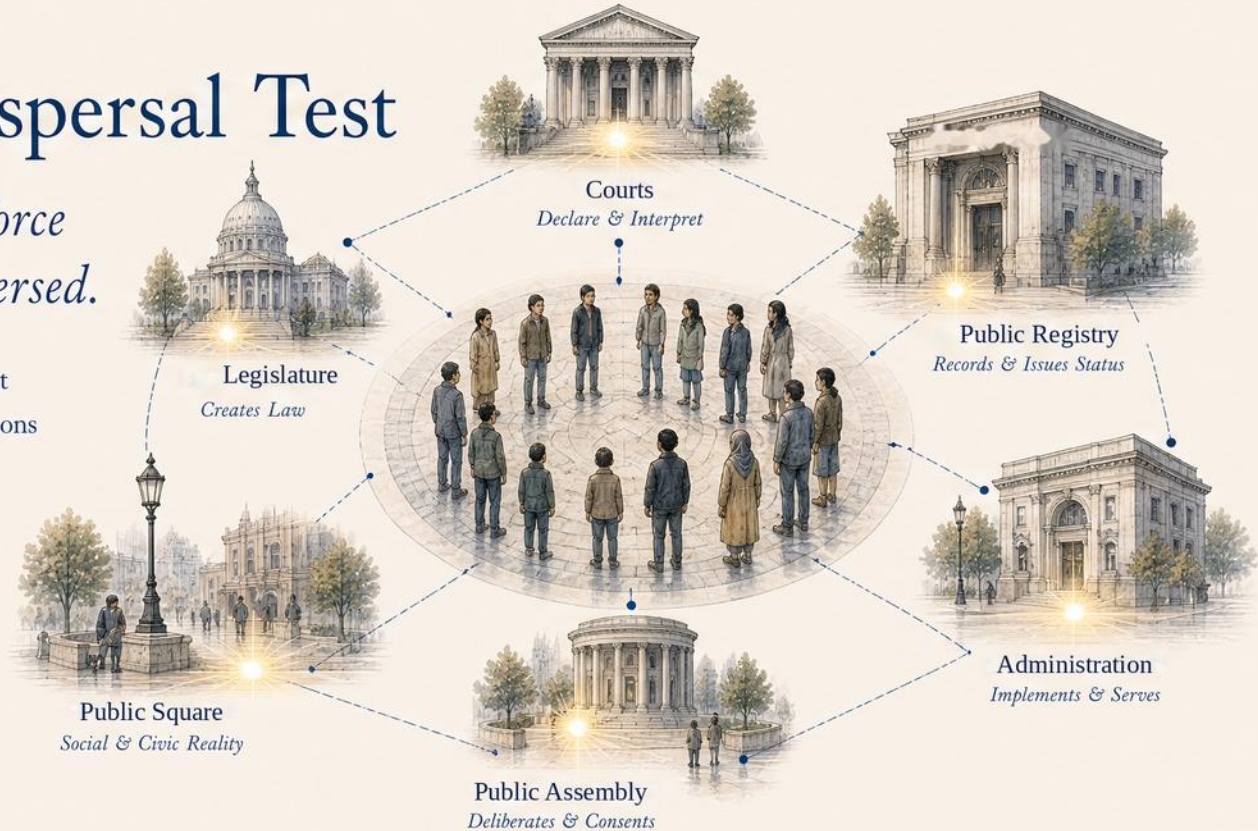
*performance  
metrics*



# The Dispersal Test

*Legitimate force must be dispersed.*

The order's force must belong among the persons whose force it is.



# The Last Court

Whose *force* is this?

A legal order must finally answer the question of the force it holds.

